

Kitchen with Breakfast Counter



Kitchen



Dining / Living Room



Exercise Room



Front Lobby



Master Ensuite



Living Room



Party Room

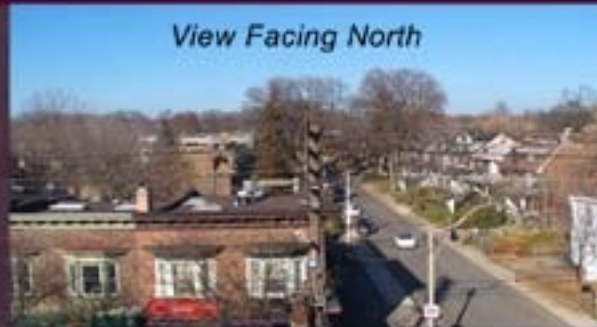


Master Bedroom with Walkout to Balcony



*1829
Queen Street East #413*

View Facing North



Bedroom 2 / Office

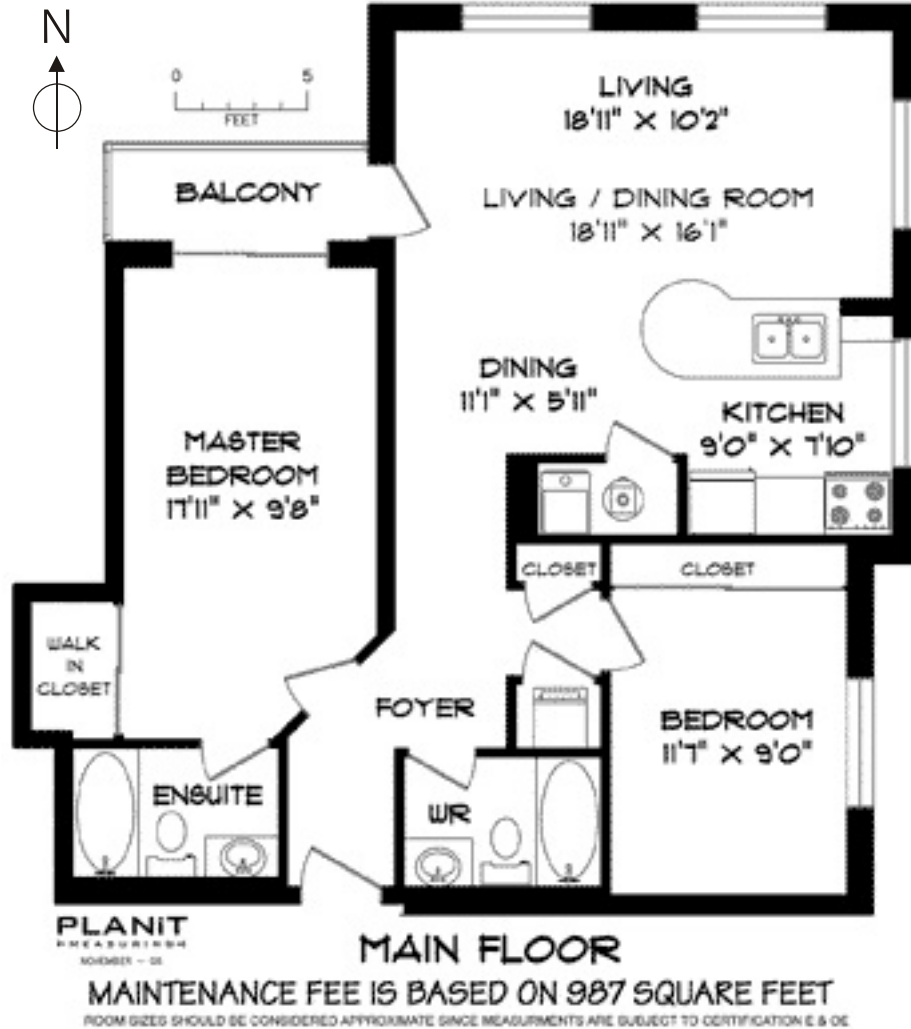


Party Room



1829 Queen St. E. #413

A Corner Condo to Consider !



www.inthebeach.com

Virtual Tour, More Photos, Plus Interactive Floor Plan

**Nick Boothby and
Christine DeMerchant**
Sales Representatives
Royal LePage Homeward - Brokerage
nick@inthebeach.com

ROYAL LEPAGE
HOMEWARD

416-698-2090

Copyright Nick Boothby and Christine DeMerchant

Building Features :

- * Well constructed by the Pemberton Group, and well maintained by Orion Management.
- * Spacious entry Lobby, with side-by side North front doors. Passage to South back door.
- * Four visitors' parking spots are at back. Extra public parking is cheap (\$3 overnight).
- * Residents' parking is all underground. Residents' individual lockers also underground.
- * 2nd floor has a large well-equipped Exercise Room (with wide balcony) in North side and an enormous Party Room on South side (with huge open terrace for summer tans).
- * There are 2 elevators for only 4 floors. Lobby security cameras connect to Unit's TV.

General Features of Unit 413:

- * It is on the prestige top, or Penthouse, floor. It is at the Building's North-East corner.
- * The Unit has a building-connected Security system with its own front-door coded pad.
- * The Unit's phone can be accessed by guests using the Building's front door key pad.
- * The owner can control temperature of the in-Unit furnace and air conditioner. (But the cost of heating, cooling, light and water are all included in monthly maintenance fees.)
- * Most ceiling lights in the Unit have been upgraded. Balcony has custom-made decking.
- * Unit's parking spot is conveniently next to the Elevator! Its locker is also extra-large.

Foyer Features :

- * Front door entry area has a tiled floor. Further into the Unit is a spacious coat closet.
- * Opposite coat closet is the Ensuite Laundry closet, with its stacked washer & dryer.

Living Room / Dining Room Features :

- * Very large and bright open-plan area. West-facing walk-out door to Balcony.
- * Three high & wide North/East-facing picture windows all have vertical window blinds.
- * The pale shade of the quality broadloom adds to the feeling of brightness and space.
- * In South wall of Dining area is door to Utility Room, with space for Pantry shelves. The Utility Room contains the Unit's gas furnace, air conditioner and hot water tank.

Kitchen Features :

- * Very spacious plan. Peninsula counter bulges to a kidney-shaped end breakfast bar.
- * Above the Peninsula counter are custom-installed additional high cabinets. These help to divide the Kitchen from the Living Room space, as well as providing extra storage.
- * The cabinets themselves are upgraded. East-facing picture window has vertical blinds.
- * Appliances are Fridge, Stove with range hood and built-in Dishwasher. Double sink.

Master Bedroom Features :

- * Walk-in closet has triple mirrored doors. The Unit's electric panel is in its back wall.
- * Ensuite 4-piece Washroom. Sliding door to Balcony has vertical window blinds.

Second Bedroom Features :

- * Currently used as office. Wall-to-wall closet has wide triple mirrored doors.
- * East-facing picture window has vertical blinds. Separate 4-piece Washroom.