



Family Room



Kitchen



Dining Room



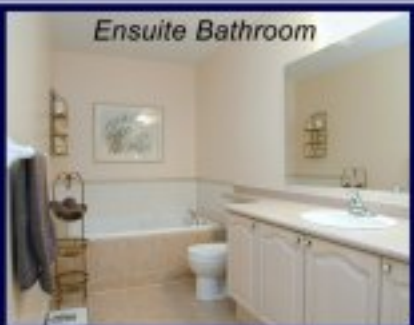
Living Room

68 Winners Circle

Presented by Nick Boothby and Christine DeMerchant



Master Bedroom



Ensuite Bathroom



Bedroom 2



Bedroom 3



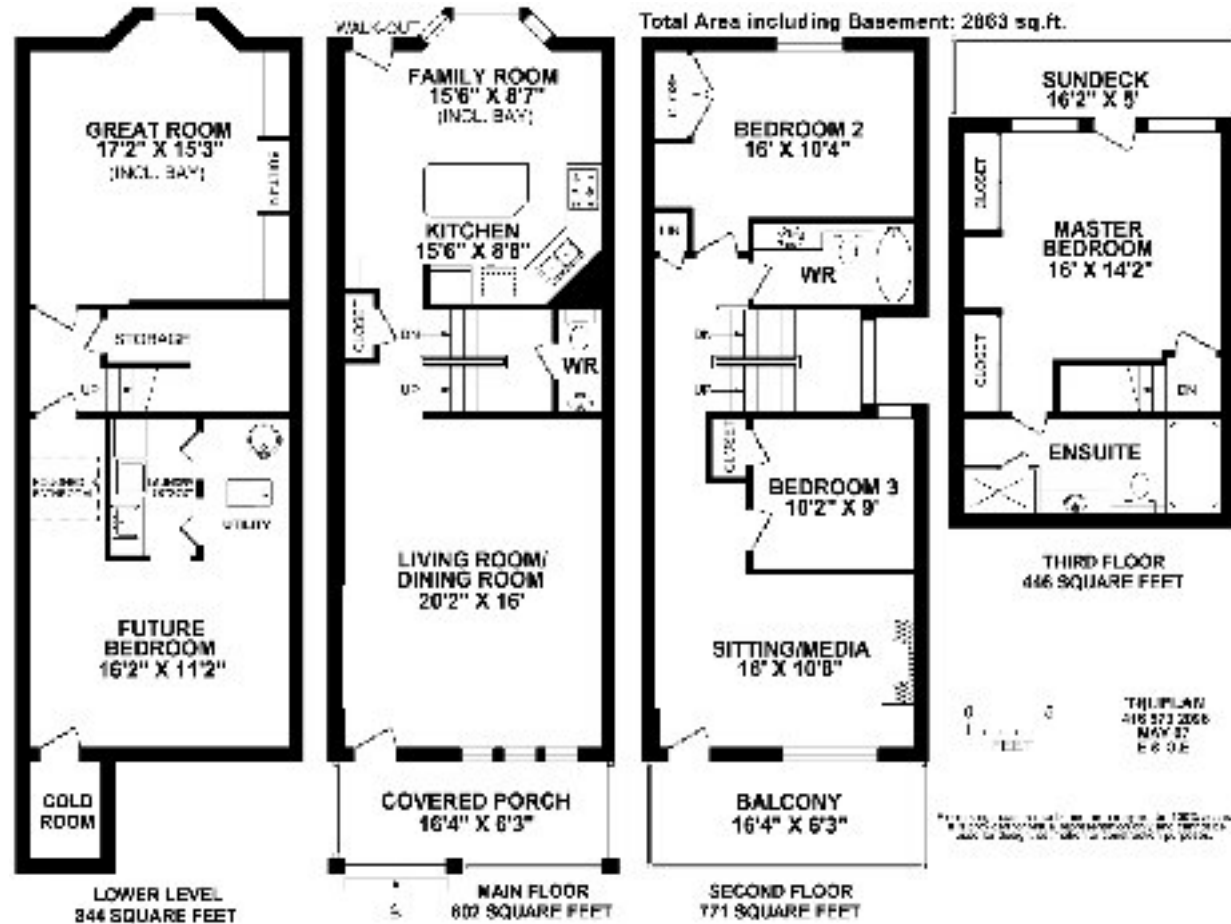
2nd Floor Bathroom



Great Room / Play Room

68 Winners Circle

New Beach Semi has wonderful working Kitchen and fabulous wood Deck!



www.inthebeach.com

Virtual Tour, More Photos, Plus Interactive Floor Plan

Nick Boothby and Christine DeMerchant Sales Representatives

416 698 2090

Royal LePage Homeward - Brokerage

Independently owned and operated

nick@inthebeach.com

1858 Queen Street E.
Toronto, ON, M4L 1H1

Rare Model on Slightly Wider Lot A special Find !

Exterior Features:

- * The Monterey (Elevation "C") Semi-Detached model in Tribute's late-build Parkview Collection.
- * This is a brick-clad home (providing valuable durability), with vinyl at the top Sundeck level.
- * Traditional Beach look: Double front Porch plus back Sundeck all have newly-painted wood rails.
- * Landscaped front Garden has curved interlocking brick pathway, and a central shared flower bed.
- * High wood-fenced back Garden has a huge Deck (freshly wood-treated) with built-in bench seating.
- * Interlocking brick Patio for outside eating, plus a grassed area. Note the extended gas BBQ outlet.
- * Spacious double Garage (2 remote controls & added eaves troughs) is accessed from rear Lane.

General Interior Features:

- * This is a Smart-wired home! It is Cable-ready with outlets in many rooms.
- * Virtually all ceiling lights have been replaced with tasteful upgrades. Most faucets upgraded too.

Main Floor:

- * Built-in Speakers in Living / Dining Room are sound-source connected to Media Room above.
- * Flat ceilings throughout this level are an upgrade. Note the crown moulding & ceiling medallion
- * Hardwood floors on whole Main floor level match the Oak open stairs. Note Coat Closet opposite.
- * Powder Room at separate level, half way down to Basement, giving added privacy. Note its alcove.
- * Upper Kitchen oak cabinets have 4 long, 2 short & 6 medium doors (2 of them glass-fronted). Lower oak cabinets have 3 doors (1 wide, 2 narrow) and 2 narrow drawers. The moveable Centre Island has 1 wide door, 1 corner door, and 4 drawers (3 shallow, 1 deep) all of them oak-clad. The Pantry cupboard has high double doors (with glass doors above twin horizontal wine rack).
- * The pot rack hanging from the ceiling is excluded. Note the Coat closet by the back door.
- * Stainless steel Kitchen Appliances include a KitchenAid Superba stainless steel side-by-side Fridge with ice & water in door, a Panasonic Micro-wave, a Bosch built-in Dishwasher, a Bosch self-clean Oven & gas counter-top Stove, and a Vent-a-hood Range Hood. (Ceiling pot rack is excluded.)
- * Small Family Room has a lovely Bay window, whose blinds will stay, and a Walk-out to Garden.

Second Floor:

- * The Sitting / Media Room has a gas fireplace, and a Cathedral ceiling. Walk-out to Porch/Balcony. Window blinds are included. Flat ceilings throughout this level are an upgrade.
- * The 2nd Bedroom has a spacious double Closet. Its window blind is included. Note desk alcove.
- * The 3rd Bedroom has a Closet. Its window blind is included. * Big 4-piece Washroom

Third Floor:

- * Master Bedroom has spacious double-door His & Hers Closets. Window & door blinds to stay. Walk-out to Sundeck, which has long-lasting composite deck boards (like 2nd floor Porch/Balcony).
- * Huge Ensuite Washroom has a wide Jacuzzi tub, separate half-glass shower, and 4-door cabinet

Basement:

- * Finished Foyer has big storage space under stairs. * Large Cold Room has b/i shelves & Sump Pump.
- * Huge Great Room / Rec. Room has a full-width built-in shelving unit with TV & computer shelves. Note the flat ceiling, with 10 pot lights at edges and 6 pot lights in centre. Laminate floor is raised.
- * Large Laundry has steel tub in 2-door cabinet. Maytag Neptune clothes Washer & gas Dryer
- * Furnace Area has twin double doors from Laundry. Rented gas Hot Water Tank. Forced air gas furnace with a connected Central Air system.
- * Unfinished 4th Bedroom area is very spacious. There are drainage rough-ins for extra Washroom.