



Dining / Living Room



Kitchen



Loft / Bedroom 3



Master Bedroom

82 Dunington Drive

Presented by Nick Boothby and Christine DeMerchant



Main Bathroom



Rec Room / Bedroom 4



Rec Room / Bedroom 4



Loft / Bedroom 3



Bedroom 2

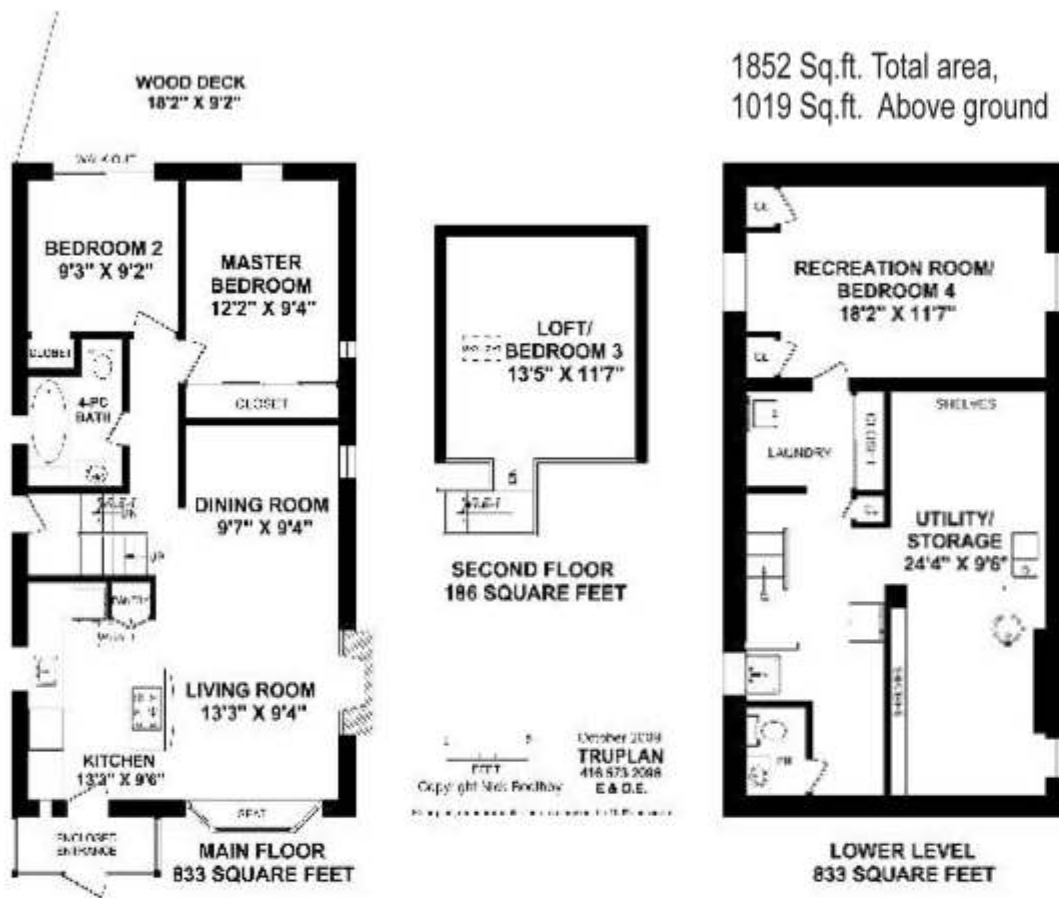


Master Bedroom

82 Dunington Drive

Unique Ultra-Modern "Bungaloft" on Traditional Tree-Lined Street !

1852 Sq.ft. Total area,
1019 Sq.ft. Above ground



More photos and link to Virtual Tour at:
<http://www.inthebeach.com>

Real Estate Homeward
Brokerage, independently owned and operated

Nick Boothby and Christine DeMerchant
Sales Representatives 416 698 2090

1858 Queen Street E Toronto, ON, M4L 1H1

nick@inthebeach.com

Exterior Features :

- * All-Brick Bungalow has extra-steep roof-line with three South-facing Skylights. This allows for the Loft !
- * Glass-enclosed Front Entrance (which doubles as mud room) to protect guests until front door opens.
- * Tarmac Private Drive for 2 cars in front of double gate + 2 more cars behind + 1 in Garage – 5 cars in all !
- * New professionally-installed paved stone pathway and steps to from the drive to the front Entrance.
- * Huge 18 ft x 9 ft raised Wood Deck overlooks back Garden. Storage space below + a high "blue box" shed.
- * Treed back Garden is charmingly cultivated in English style. Note full fencing (& dbl gate) to keep dogs in !
- * Single-car Garage has storage shelves. Attached Greenhouse has its own power. It's possible to heat it.

Interior General Features :

- * Eng. hardwood strip-flooring for whole Main level. (Floor for Kitchen is Ceramic & for Bathroom is Slate.)
- * Home was re-built inside to create a Cathedral Ceiling and Loft, with attractive re-enforcing cross-beams.
- * Open staircase adds to home's spacious feeling ! Note the frosted glass where Loft overlooks Living area.
- * The many pot lights installed in the Living area and Bedroom ceilings are all served by upgraded wiring.
- * Flat ceilings throughout the home are beautified by crown-molding details.

Main Floor Room-by-Room Features :

- * Kitchen's Foyer has coat hooks above shoe locker. A matching storage cupboard is above those hooks.
- * The Kitchen boasts a custom-built Centre Island, with inset 4-ring GE Profile gas Stove. Above it is a Microwave / Range-hood combination, with glass-fronted & backed illuminated maple cabinets each side. Other Kitchen features: Big trough sink, ceramic backsplash, 2 pennant lights, 2-seater Breakfast bar !
- * Kitchen Cabinets above counter level also include 6 long, 2 medium & 2 short doors. Below counter level there are 5 lower doors, plus 9 drawers & the built-in Dishwasher. The Fridge is on the South outside wall.
- * The Pantry matches the maple cabinets. It has 2 long & 4 short doors, 2 wide pot drawers & 2 slim drawers.
- * The Living Room has 2 spot lights above a stone-feature wood-burning fireplace with wide mantle piece. A wide & deep bay window, which extends outwards beyond the front wall, adds both light and space.
- * The Dining Room has a picture window with blinds. 7 pot lights are under the "picture rail" of both rooms.
- * The Master Bedroom has 3 brand-new frosted closet doors & California shutters for 2 windows. 4 pot lights.
- * The 2nd Bedroom/Office has sliding glass doors for walk-out to Deck. Small closet. 4 pot lights.
- * The Main Bathroom has highly upgraded tile walls & counter, rain-head shower over deep tub. 4 pot lights.

Loft Level Features :

- * Family Room (could be Bedroom 3) has Skylight which can be opened. 5 pot lights at ceiling's apex.

Basement Room-by-Room Features :

- * Separate entry at the side of house has a small "Landing" with storage below. Steps also go up to Main floor.
- * 24 foot long Foyer (3 pot lights) is divided into : Laundry area with gas Dryer, big Cedar closet & linen closet, moulded sink under window – opposite the Washer, & Powder Room with eng. hardwood floor.
- * The Recreation Room / 4th Bedroom has new plaster ceiling with 6 pot lights, and new-carpeted floor. It has 2 small closets each side of a ground-level window. Like rest of house it is quite recently painted.
- * The Utility / Storage Room has many built-in shelves (and loose book shelves too, which stay). The work bench also stays, as does the Treadmill Exerciser. The gas Furnace is recent. The Hot Water Tank is rented.